

VARIOS ACOPLEROS Y BRIDAS

VARIOUS COUPLINGS, FLANGES AND BASKETS



▶ **ACOPLES EXPRESS**
EXPRESS COUPLINGS



▶ **ACOPLES BARCELONA** 
BARCELONA COUPLINGS



▶ **ACOPLES GFR, BSP Y PIEZAS INTERMEDIARIAS** 
GFR COUPLINGS, BSP AND ADAPTATOR RINGS



▶ **ACOPLES API**
API COUPLINGS



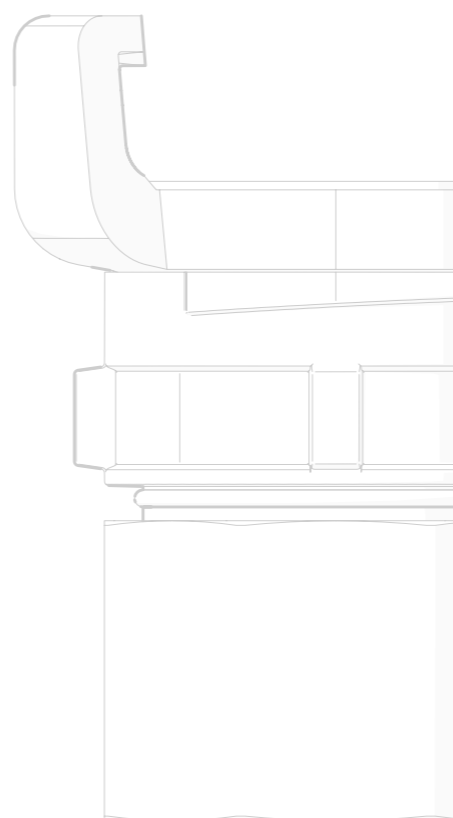
▶ **VISORES**
VISUALISERS



▶ **RACORES VENTILACIÓN**
VENTILATION COUPLINGS

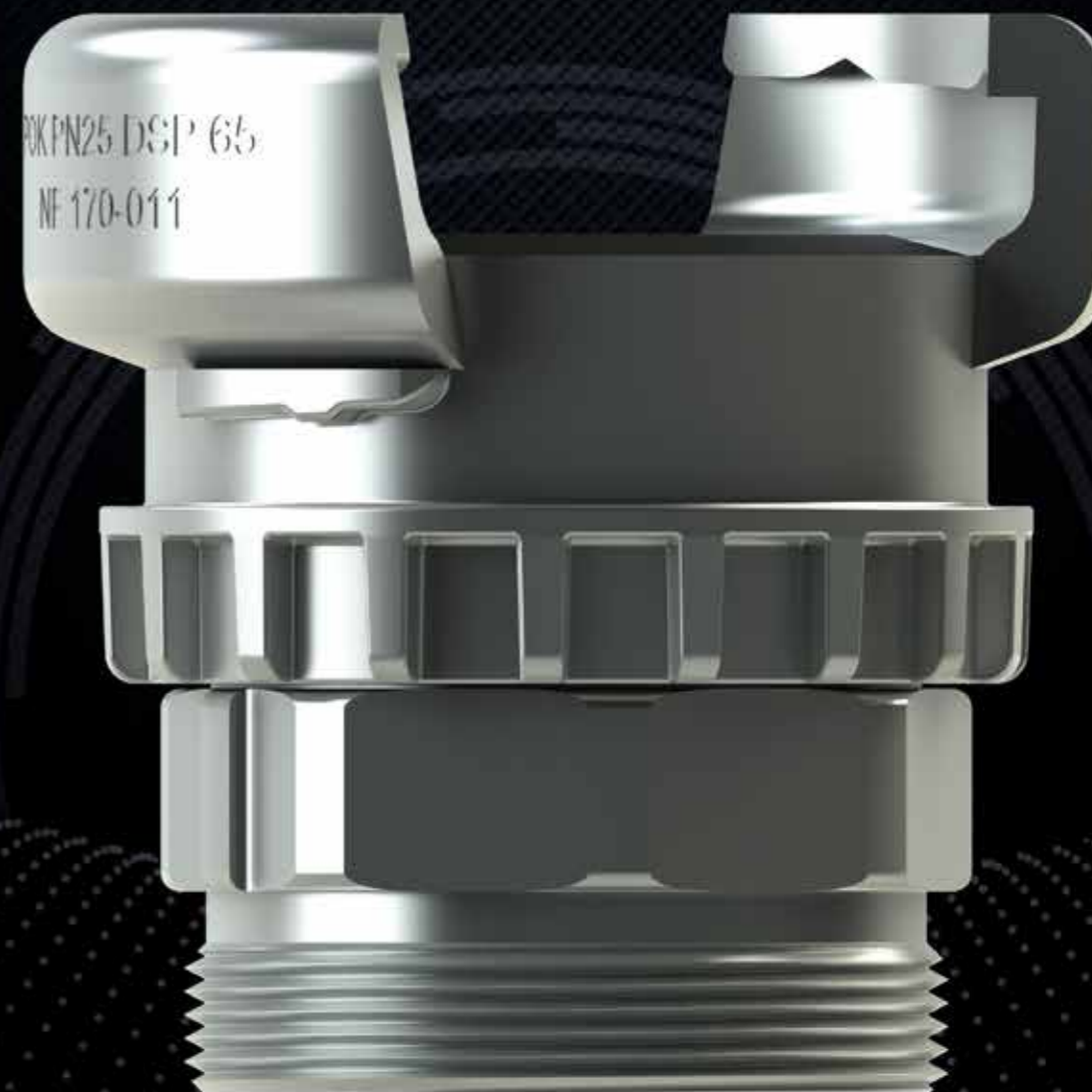


▶ **BRIDAS**
FLANGES



PLA_01082_Flyer SP-EN_Acoples_Couplings

ACOPLES COUPLINGS



POK SAS

18 Cours Antoine Lavoisier - 10400 Nogent-sur-Seine - FRANCE
Tél. : +33 (0)3 25 39 84 78 - Fax : +33 (0)3 25 39 84 90
info@pok.fr export@pok.fr www.pok.fr



YouTube



CREAMOS CON INNOVACIÓN / WE CREATE WITH PASSION

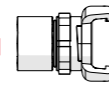
Fabricación Francés, de conformidad con las normas, certificados, disponibles en aleación de aluminio, acero inoxidable, bronce y polipropileno.
French manufacturing, conform to the norms, certified, available in aluminium alloy, stainless steel, bronze and polypropylene.



ACOPLES GUILLEMIN 
SYMMETRIC GUILLEMIN COUPLINGS

- ▶ **Diametro:** De DN15 a DN150 / *Dimensions: from DN15 to DN150 - 1/2" to 6"*
- ▶ **Presión nominal:** PN6 a PN20 / *Nominal pressure: from PN6 to PN20*
- ▶ **Materiales:** aleación de aluminio, acero inoxidable, bronce y polipropileno
Material: aluminium alloy, stainless steel, bronze and polypropylene
- ▶ **Con mangas entalladas, onduladas, helicoidal, para soldadura, roscado macho o hembra**
With multi-serrated hose shank, double ribbed hose shank, helicoidal hose shank, welding shank, male of female thread

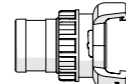
Suivant normes
NF E 03-005
NF E 61-701 - NF S 61-703
NF E 29-572 - NF T 81-101
ISO R228 - DIN 259
In compliance with norms



ACOPLES DSP-AR 
DSP-AR COUPLINGS

- ▶ **Certificados grabados / Certified with marking**
- ▶ **Dimensiones:** entre DN40 y DN100 / *Dimensions: from DN40 to DN100 - 1 1/2" a 4"*
- ▶ **Presión nominal:** PN25 / *Nominal pressure: PN25*
- ▶ **Materiales:** aleación de aluminio y bronce / *Material: aluminium alloy and bronze*
- ▶ **De tubos entallados, acanalados, con rosca macho o hembra**
With multi-serrated hose shank, double ribbed hose shank, male of female thread

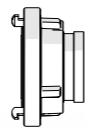
Suivant normes
NF E 03-005
NF S 61-701 - NF E 29-572
ISO R228 - DIN 259
In compliance with norms



ACOPLES STORZ 
STORZ COUPLINGS

- ▶ **Dimensiones:** desde DN25 hasta DN250
Dimensions: from DN25 to DN250 - 1" to 10"
- ▶ **Presión nominal:** PN16 / *Nominal pressure: PN16*
- ▶ **Materiales:** aleación de aluminio, bronce y latón
Material: aluminium alloy, bronze and brass
- ▶ **Con tubos entallados, acanalados, con rosca macho o hembra**
With multi-serrated hose shank, double ribbed hose shank, male of female thread

Suivant normes
DIN
NF E 03-005
NFPA 1963 - GB 125 14.2
ISO R228 - DIN 259
NEN 3374
In compliance with norms



Suivant norme
NF E 03-005
ISO R228 - DIN 259
BS 336
In compliance with norm

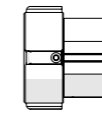


 **ACOPLES INSTANTÁNEOUS & BSRT**
INSTANTÁNEOUS & BSRT COUPLINGS

- ▶ **Dimensiones:** de 1 1/2 a 6" / *Dimensions: from 1 1/2 to 6"*
- ▶ **Presión nominal:** PN16 / *Nominal pressure: PN16*
- ▶ **Materiales:** aleación de aluminio y bronce
Material: aluminium alloy and bronze
- ▶ **Con tubos con rosca macho o hembra**
With male or female thread



Suivant normes
NF E 03-005
ISO R228 - DIN 259
NFPA 1963
In compliance with norms

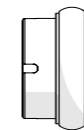


 **ACOPLES NST-NH**
NST-NH COUPLINGS

- ▶ **Dimensiones:** de 1 a 6" / *Dimensions: from 1" to 6"*
- ▶ **Presión nominal:** PN16 / *Nominal pressure: PN16*
- ▶ **Materiales:** aleación de aluminio y bronce
Material: aluminium alloy and bronze
- ▶ **Con rosca macho o hembra**
With male or female thread



Suivant normes
JIS B 9911.1968
ISO R228 - DIN 259
NF E 03-005
In compliance with norms

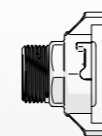


 **ACOPLES MACHINO**
MACHINO COUPLINGS

- ▶ **Dimensiones:** de DN65 a DN80
Dimensions: from DN65 to DN80
- ▶ **Presión nominal:** PN16
Nominal pressure: PN16
- ▶ **Materiales:** Aleación de aluminio
Material: aluminium alloy
- ▶ **Con roscas macho o hembra**
Male or female thread couplings



Suivant normes
NF E 03-005
ISO R228 - DIN 259
GOST 28352-89
In compliance with norms



 **ACOPLES GOST**
GOST COUPLINGS

- ▶ **Dimensiones:** DN25 a DN150 - 1" a 6" / *Dimensions: from DN25 to DN150 - 1" to 6"*
- ▶ **Presión nominal:** PN16
Nominal pressure: PN16
- ▶ **Materiales:** aleación de aluminio, bronce y latón
Material: aluminium alloy, bronze and brass
- ▶ **Con tubos dentados y rosca macho o hembra**
With multi-serrated hose shank, male of female thread

